



Resigen®

THIS IS A PESTICIDE ADVERTISEMENT
TO BE HANDLED BY TRAINED PERSONNEL ONLY.

DIRECTIONS FOR USE:

PESTS	APPLICATION TECHNIQUE	DILUTION RATE	SPRAY VOLUME
Mosquitoes (<i>Aedes aegypti</i> , <i>Culex quinquefasciatus</i>)	Outdoors - ULV	50 ml product + 1000 ml diesel/ kerosene (1 : 20)	1 litre spray solution/ha
		100 ml product + 1000 ml diesel/ kerosene (1 : 10)	500 ml spray solution/ha
Flies (<i>Musca domestica</i>)	Outdoors - Thermal fogging	2 ml product + 1000 ml diesel/ kerosene (1 : 500)	*50 litre spray solution/ha
		10 ml product + 1000 ml diesel/ kerosene (1 : 100)	**10 litre spray solution/ha
	Indoors - ULV	100 ml product + 1000 ml water (1 : 10)	10-20 ml spray solution/ house or 100 ml spray solution/2000m ³
	Indoors - Thermal fogging	20 ml product + 1000 ml water (1 : 50)	1 litre spray solution/2000m ³ or 100-200 ml spray solution/ house



* High output machines that gives a flow rate of 30-190 litre/hour.

** Low output machines that gives a flow rate of 12-25 litre/hour.

Pack sizes: Resigen is available in 1 litre container and 25 litres drum.

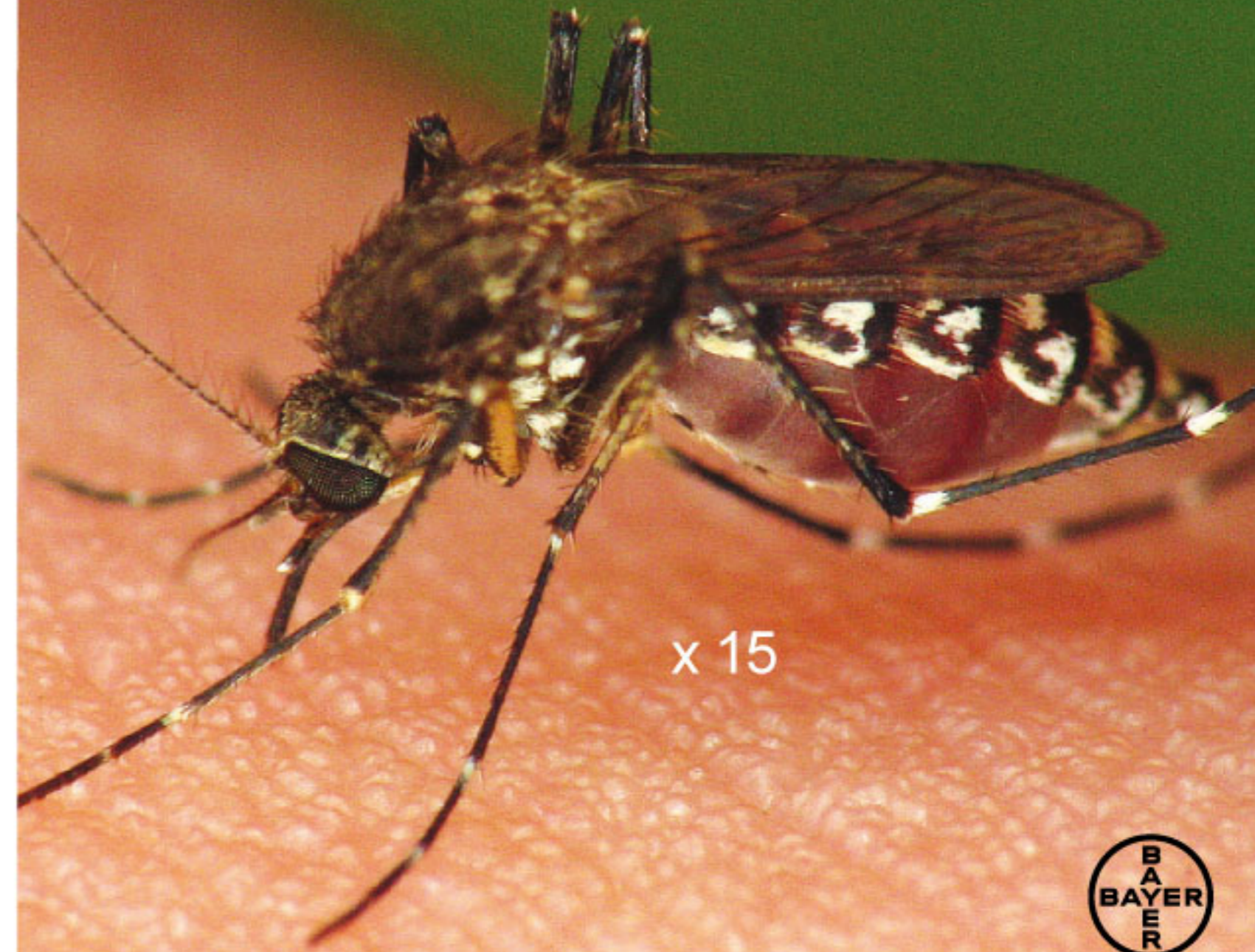
Bayer Co. (Malaysia) Sdn Bhd (7563 M)
B-19-1 & B-19-2, The Ascent Paradigm,
No. 1, Jalan SS 7/26A, Kelana Jaya,
47301 Petaling Jaya, Selangor, Malaysia.
Tel.: 03-7801 3121 Fax: 03-7886 3993
Email: es.malaysia@bayer.com

READ THE LABEL BEFORE USE

JIRP. E/0217/057

For more information please contact:

A space spray concentrate suitable for indoor and outdoor applications



x 15



Space spray concentrate

Resigen is a space spray concentrate (diesel or kerosene) suitable for dilution in light oil or water and application as an ultra low volume (ULV), thermal fog.

Resigen is effective and associated with Bayer's field work and its role in public health care.

Resigen controls mosquitoes and flies both indoors and outdoors. The product may be used in domestic, industrial and public health situations. Resigen droplets disperse evenly to contact and kill mosquitoes and flies in flight and at rest. Resigen is pyrethroid based.

Guide to spray

For the better insecticidal effect, space spraying should always be carried out during the adult insects' time of peak flight activity. This will usually be in the early morning for flies, while timing for mosquitoes (depending on the target species) is most likely to be in the early morning or early evening.

Treatment of treated areas should be repeated only if necessary. Rotate with other suitable pesticides which are of different mode of action to ensure that newly emerging adults will be killed before they can lay more eggs. This 'attack' phase will reduce the entire insect pest population to a level where only regular maintenance spraying is required.

To ensure that Resigen is used to maximum effect each time, it is not recommended to spray in the heat of the day, when wind speeds exceed 10 kph, or during dust storms or rainfall.

- **Versatile application**
easily dilutes with either water or oil for thermal fogging and ultra low volume (ULV) treatments against flying insects, both indoors and outdoors.
- **Knockdown and kill**
with mosquito larvicidal activity.
- **Long storage life**
3 year shelf-life limits wastage.

